

RAILWAY HERITAGE TRAIL

BUITENZORG – SOEKABOEMI - TJIANDJOER

How a 90km railway line in the far east changed the world history

Dicky A. S. Soeria Atmadja

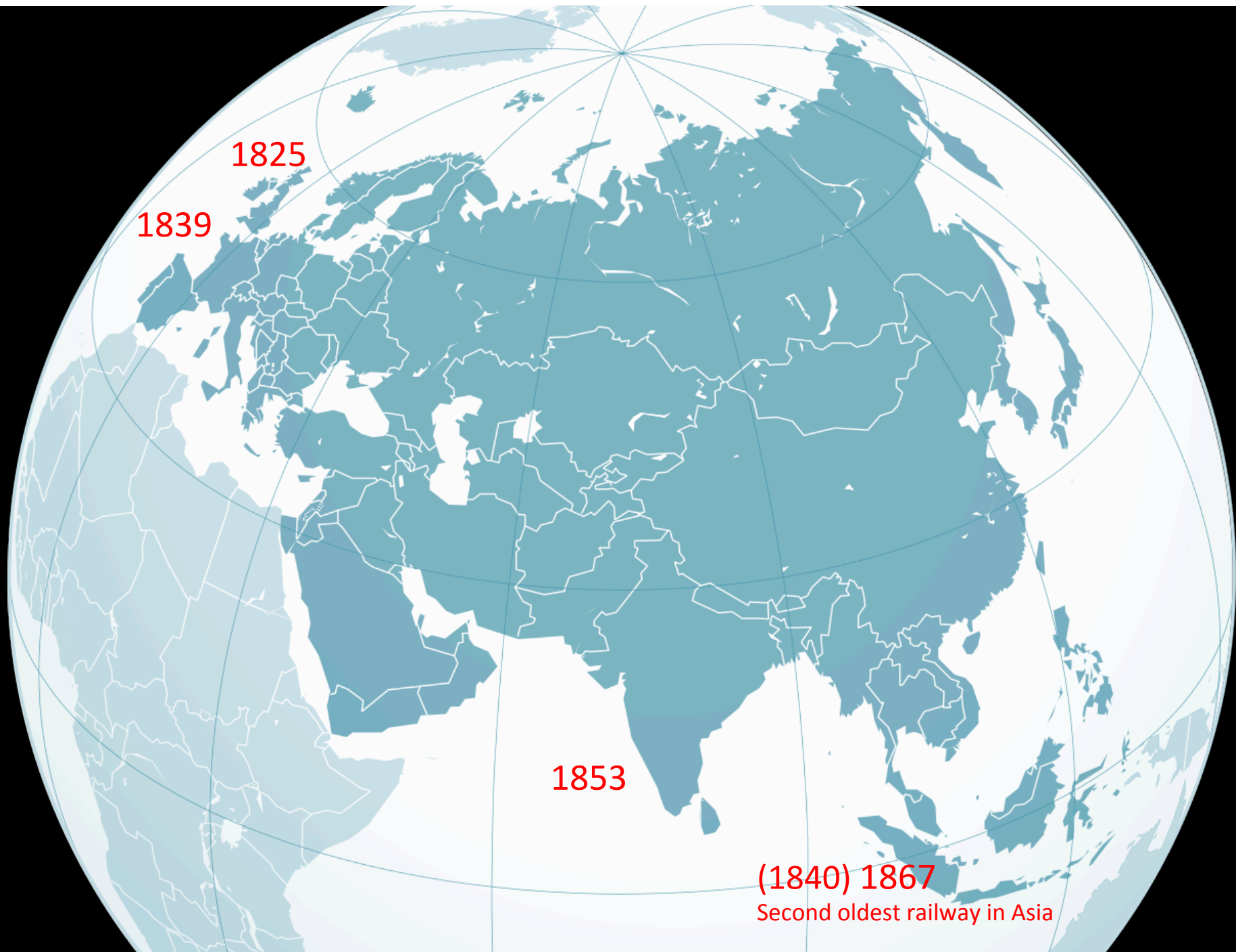
Principal Cartographer, Center for Remote Sensing – Bandung Institute of Technology, Indonesia
Member of Commission on the History of Cartography – International Cartographic Association
Member of International Cultural Tourism Committee, International Council on Monuments & Sites
Member of the World Tourism Association for Culture and Heritage
Member of Indonesian Interpretation Association
Board of Expert, Indonesia Museum Association, West Java Region



Java War
(1825-1830)



Cultuurstelsel (Cultivation System)
(1830 – 1870)



1825

1839

1853

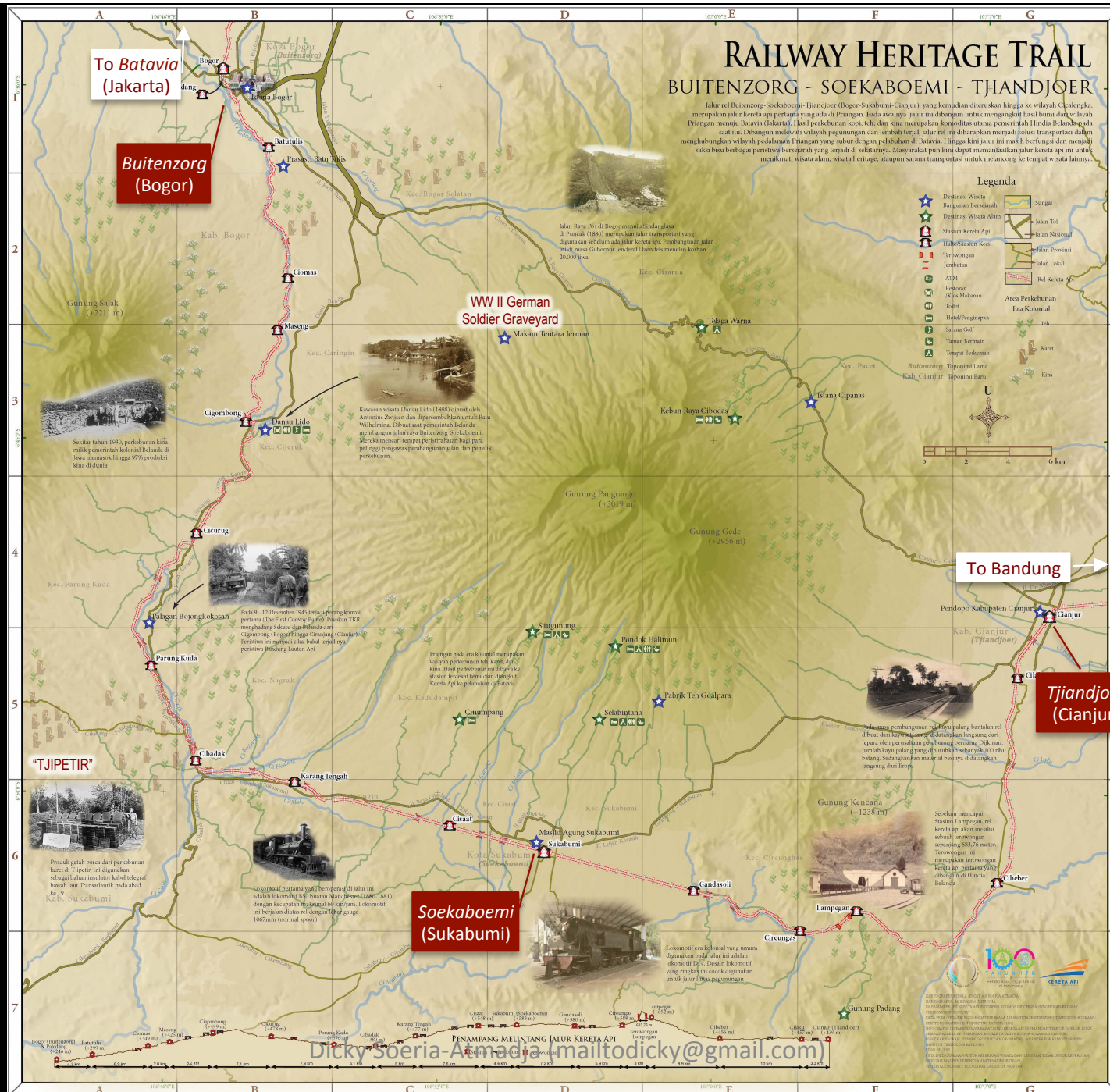
(1840) 1867

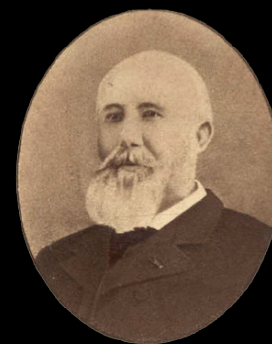
Second oldest railway in Asia

JALUR KERETA API HINDIA BELANDA DI JAWA

Pada masa sekitar 1800-an alat angkutan yang digunakan oleh manusia adalah kerbau. Menyusuri tahun 1800 ini, **7460 km of colonial railway lines** kereta api berkembang sangat pesat pada tahun 1881-1925.







Dicky Soeria-Atmadja (mailto:dicky@gmail.com)

Buitenzorg,

*Exploring a small town's
Splendor Old Station
1881*



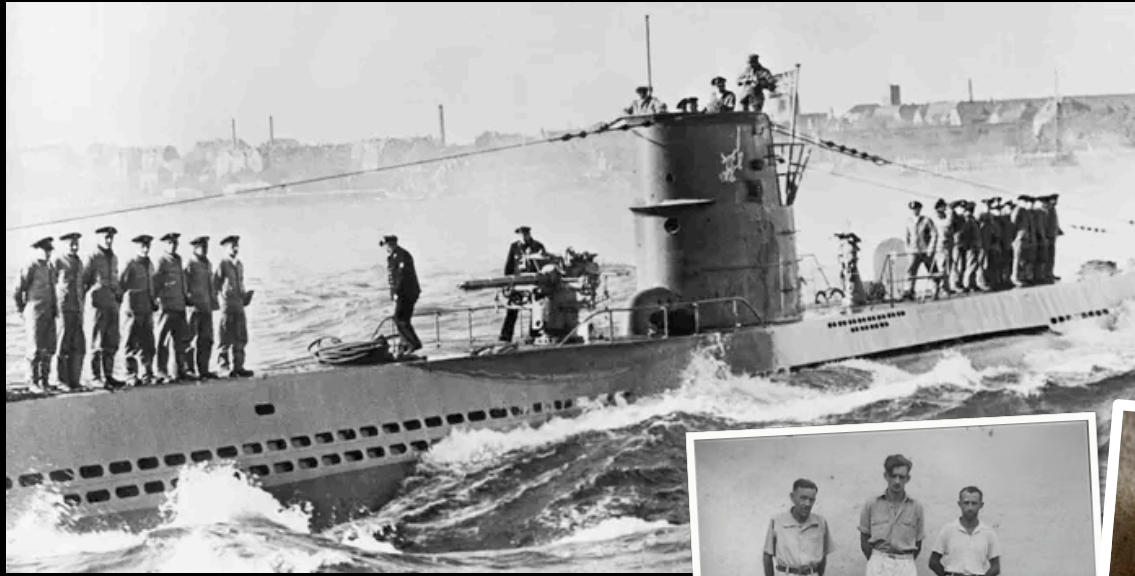
Dicky Soemartoadja (mailto:dicky@gmail.com)



*Senic views that can be
enjoyed along the railway.
From creeks to paddy fields,
from hills to cloudy mounts
far behind.*

*Town after town, village after
village, station after station,
bridge after bridge.*

Indulge our eyes...



What were these German soldiers doing in Indonesia, 11,000 km away from Europe during WW II?

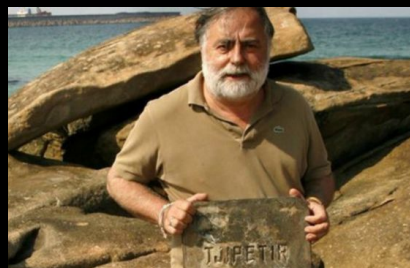
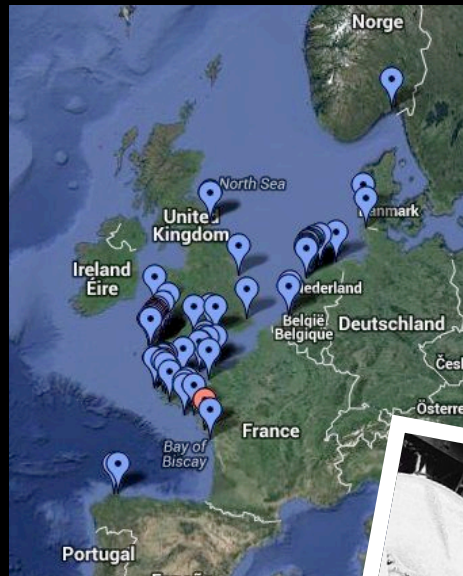
And how could their presence here and this particular railway line changed the course of world war in European theatre?

Challenge our curiosity..



And what these slabs ashored along Western Europe coastline a couple of years ago actually are? No clue but a word “Tjipetir” engraved on it.

And how this particular railway line connected a small village far in the heart of West Java with thousands of miles of intercontinental telegraph network in the turn of 19th to 20th century?





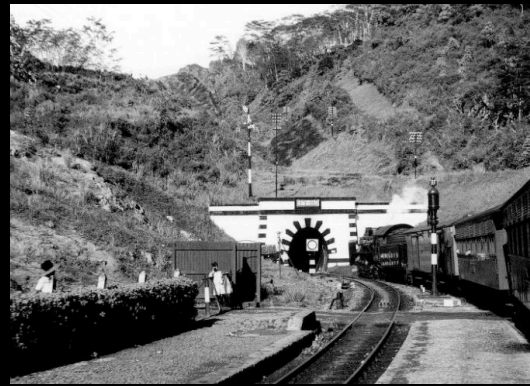
How the world population could be in the beginning of 20th century, when malaria outbreak occurred in many countries while more than 90% of world quinine demand were supplied by Indonesia. And the biggest quinine factory in the world was in Bandung.

It is very interesting to find out where all quinine plantations were -particularly in West Java- and how they were transported to that factory and to the nearby main harbor in Batavia (Jakarta).



When did we use 'tea bags' for the first time? Not so long ago?

Well, practically people in the tea plantation here had already used it more than 100 years ago. And what was the role of this particular railway line? Very interesting to listen to the story, from Northern India, to West Java, then to the World.



How could we feel when walking through the oldest railway tunnel in Indonesia (1879-1882) between Sukabumi & Cianjur while listening to its remarkable construction history and miserable story of the local labors during colonial times.



an Inspiring Cartographic Tour
by CRS - ITB

RAILWAY HERITAGE TRAIL



Buitenzorg – Soekaboemi – Tjiandjoer

‘We will be waiting for you...!’