



嘉阳·桫欏湖
Jiayang-Suoluo Lake

Train of Jiayang

Little train carries the memory of the past



Presenter: Jin Yu

2023.12

Brief History of The Train①



Jiayang Coal Mine, the first Sino-British joint venture in Sichuan, was **founded** in Bajiaogou, Qianwei County, Leshan City



1938

In August, **construction of railway began** between Bajiaogou and Shixi in order to transport coal out of the mountain



1958

On July 12, the railway line, which was in 600mm gauge in a total length of 20km, was **open to traffic**



1959

The railway line underwent a full-scale transformation, whereby the track gauge was widened to **762mm**



1960

The coal transportation and passenger service were separated, hence **passenger train** was inaugurated



1978

Jiayang Group declared a plan to scrap the railway in order to cut down the operating losses, but this news drew wide attention and outcry from the public for keeping it as a **historical relic**



2003

Brief History of The Train②



Sichuan Provincial Government promulgated policy measures to list the Jiayang narrow-gauge railway as an **industrial heritage**



2004

The Jiayang narrow-gauge train and Bajiaogou-Shixi railway were collectively named a **key historical site and industrial heritage** under preservation by the Leshan Municipality



2006

The Jiayang narrow-gauge train and Bajiaogou-Shixi railway were named **key historical sites** under preservation by the Sichuan Provincial Government



2007

The naming ceremony of the Pride of Leicestershire was held, conferring the Jiayang narrow-gauge train a **symbol of friendship** between China and The Great Britain



2007

The Jiayang narrow-gauge train - Bajiaogou-Shixi railway – the old pit of Huangcunjing, having passed review by the Ministry of Land and Resources, were officially named **Jiayang National Mining Park of Sichuan**



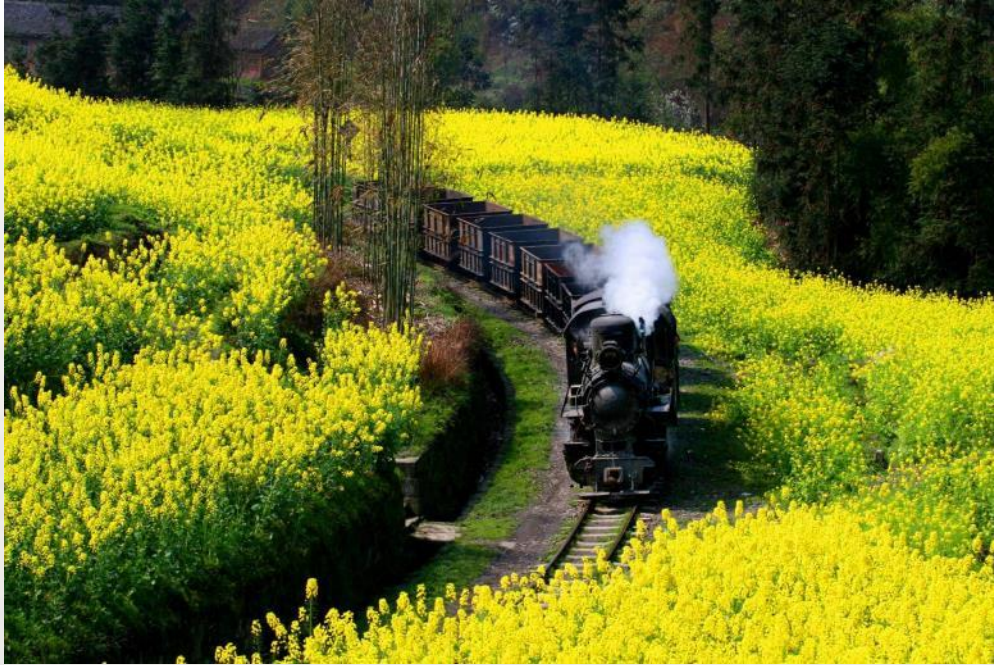
2010

A Living Fossil of the Industrial Revolution

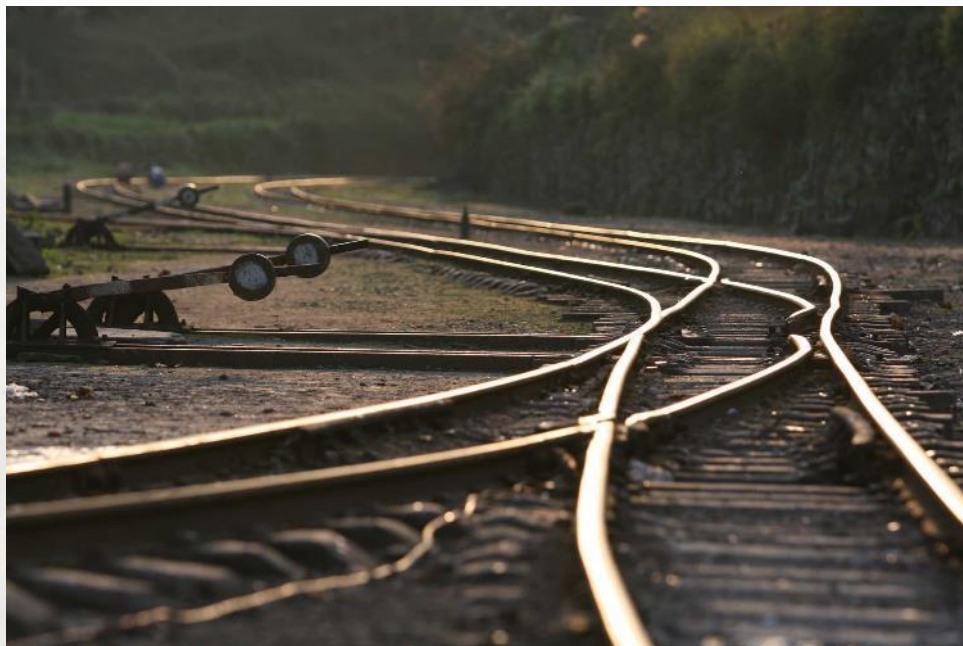


In 1938 a coal mine was founded in the small town of Bajiaogou (Plantain Valley) in Qianwei County, Leshan, Sichuan Province in southwestern China and the first Sino-British joint venture in Sichuan, Jiayang coal mine company, was born .

In 1958 a railway was built between Bajiaogou and Shixi, which served as the only means of transport for the local people to go in and out of the valley for dozens of years. Now for visitors, it is the way to experience the past and see the steam locomotives that can not be easily found.



Now on the track, six steam locomotives still remain in working condition. Typed as ZM16-4 they were built by the Shijiazhuang Motive Power Machinery Works in the 1950s and 1960s as coal-burning locomotives with 0-8-0 wheel arrangement on narrow-gauge track, weighing 16 tons, delivering 3,168kg tractive effort, generating 1.3MPa working pressure from the boiler and running at a maximum speed of 35km/hour with a control speed with passengers at 20km/hour.



The narrow-gauge (762mm) railway line on which the little train runs is between Bajiaogou town and Shixi town in Qianwei County, which is 12 km from the county seat of Qianwei. Total length of the track is 19.84km and there are 6 tunnels and 108 curves with minimum radius of 70m, maximum gradient at 36.14‰ and a difference of 238m in elevation along the line.



The Steam Era – Manual Operation

The Jiayang little train retains the most primitive way of operation of the steam era: ① The coal is manually charged by fireman; ② The engine is manually piloted and directed by hand-waved signal flag and mouth-blown whistle; ③ The track is switched manually; ④ The carriages are coupled up and braked manually, and communication is passed by hand-swung telephones.

These constitute inseparable components of the industrial heritage.





FOLLOW THE LITTLE TRAIN



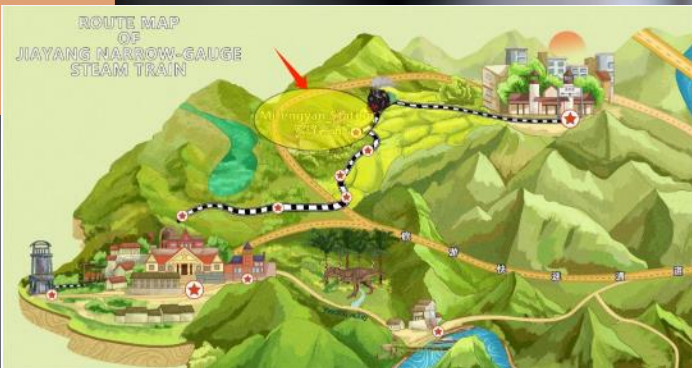
ROUTE MAP OF JIAYANG NARROW-GAUGE STEAM TRAIN





Yuejin Station

Yuejin (Leap-forward) station got its name due to the bridge that was built during the Great Leap-forward Period (1958~1960). It's where the headquarters of the Jiayang Group is located, which is the entrance to the Jiayang National Mining Park in the making.



Mifengyan (Bee Crag) Station

As limited by a narrow terrain, it's not possible for the train to make a turn here. A Y-shaped turnout track was set for the locomotive to turn around. It's a perfect spot for sightseers to watch the train switch its head and couple up with the carriages by hand, and have a photo taken with the little train.





Duanjiawan (Duan' s Bay) Scenic Spot

It' s around 200m from the Mifengyan station, which offers a vintage point to photo the little train juddering through the fields of rapeseed flowers. It is also known as one of the 100 best spots for photographs in Sichuan (*Chinese National Geography, 2013*)



Caiziba (Rapeseed Dam) Station

Caiziba is where dense groves of rapeseed blossom are scattered on the trackside of the railway, where the little train goes along a large C-shaped curve (radius at 70m). It's also a best spot to watch the train going through the bucolic scenery.



Liangshuituo (Bright Water Pool) Scenic Spot

It's the best spot to watch the little train going through the valley, dam and reservoir, where tung flowers are in dense blossom. The sightseeing train is scheduled to stop here for the tourists to watch the scene. When the sunshine is reflected on the steam spurted from the engine, a multi-colour rainbow will appear.



Bajiaogou (Plantain Valley) -The Terminal

As the birthplace of the first Sino-British joint venture coal mine in Sichuan since 1931, Bajiaogou is included in the scope of protection of the provincial level industrial heritage. Decades of building of the mine has resulted in prosperity typical of a mining area. In a unique topography, it's warm in winter, cool in summer, and free from industrial pollution, serving as a fine summer resort. Buildings in the Soviet type, British style, and grey tile-roofed house in southwestern Sichuan style boast their distinctive architectural characteristics. The simple humanistic and historical landscapes qualify Bajiaogou an emerging film and telepicture shooting base.



THE LITTLE TRAIN TODAY





In 2013, China Railway Museum Experience Center Of Jiayang Narrow-Gauge Train managed to establish.



2019-2021

150000+ visitors/year on average



As more and more families taking trips to Jiayang, love for the little train has been passed down from generation to generation.



Meet The Derivative Products



- Train stop board-shape brooch



- Refrigerator magnet



- Post cards

And more...

Besides The Little Train



Huangcunjing Mine (Huangcun Pit), the site of the No. 1 pit of the Jiayang Coal Mine, is now a reality mine for sightseers to experience miners life -- the only one of its kind in China.



Besides The Little Train



Jurassic Adventure Valley, where the dinosaurs “live” , would be a wonderland for the kids.



Besides The Little Train



Jiayang Suoluohu (Alsophila Spinulosa Lake) National wetland park, the home of the living fossil for plants kingdom. The tourists can enjoy the amazing view by boat.





**Alright.
Enough pictures and
introduction for today.**

**Please watch a video clip
before we say goodbye.**

March 2023
Duanjiawan (Duan' s Bay) Scenic Spot



A steam locomotive is pulling a train of green passenger cars along a track. The locomotive is emitting a large plume of white steam. The train is moving towards the right. On the left, a blurred green and yellow object is visible. On the right, there are trees and a small building with a tiled roof. The text "THANK YOU" is overlaid in large white letters, and "SEE YOU IN JIAYANG!" is overlaid in smaller white letters below it.

THANK YOU

SEE YOU IN JIAYANG!